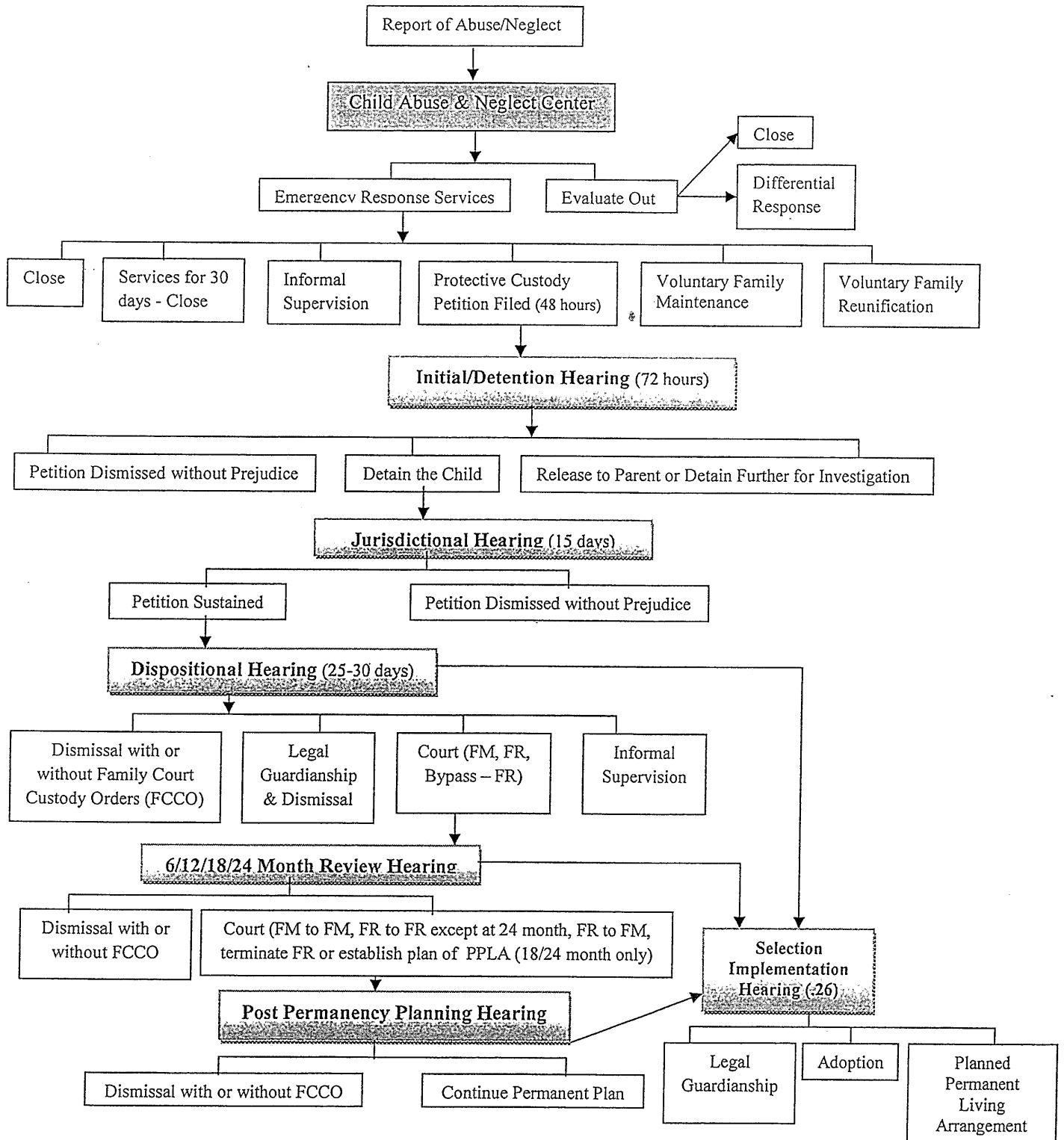


## Juvenile Dependency Process Flow Chart



# **GROUNDS FOR JURISDICTION**

## **Welfare & Institutions Code §§ 300 (a) – (j)**

- (a) Serious Physical Harm – nonaccidental – by parent / LG**
- (b) Failure to Protect (includes CSEC)**
- (c) Serious Emotional Damage - caused by parent / LG, or parent / LG cannot meet child's emotional needs**
- (d) Sexual Abuse - by parent / LG / household member, or by another when parent / LG knew or should have known**
- (e) Severe Physical Abuse – Child Under 5 – by parent / LG, or parent / LG knew or should have known**
- (f) Caused Death of Another Child through Abuse / Neglect**
- (g) No Provision for Support (includes Safe Surrender)**
- (h) Freed for Adoption – “legal orphan” ≥ 12 months**
- (i) Cruelty - by parent / LG / household member, or by another when parent / LG knew or should have known**
- (j) Abuse of Sibling - under (a),(b),(d),(e),(i) → risk to child**